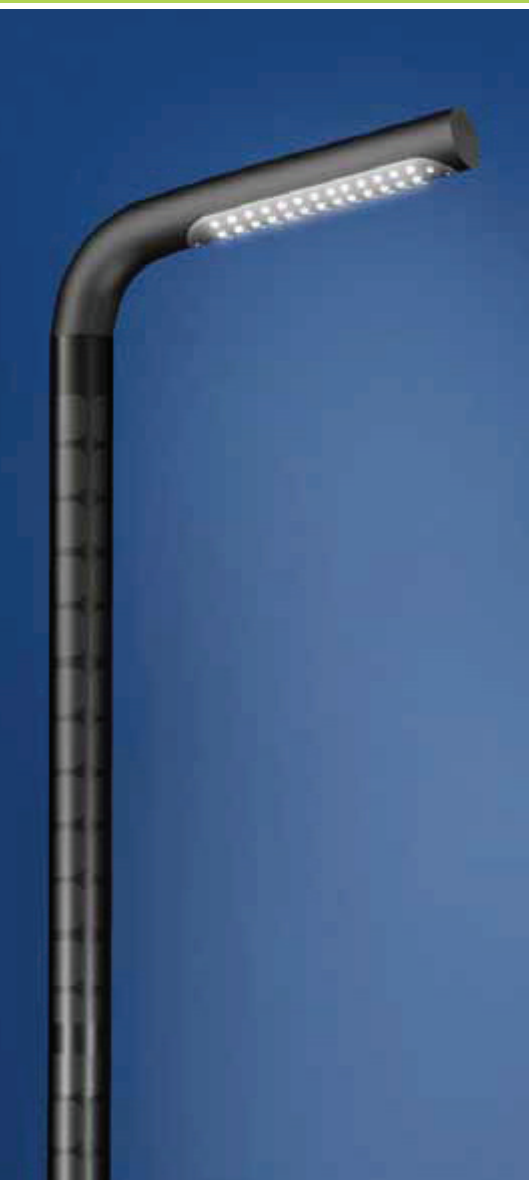


**SOLAR**  
**VISION**  
LIGHTING TECHNOLOGIES



technical data

**mira**

**8000 P200**

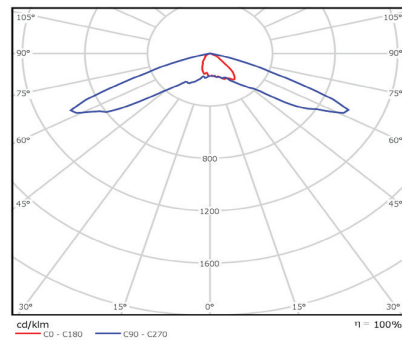
# product specification

## mira 8000 P200

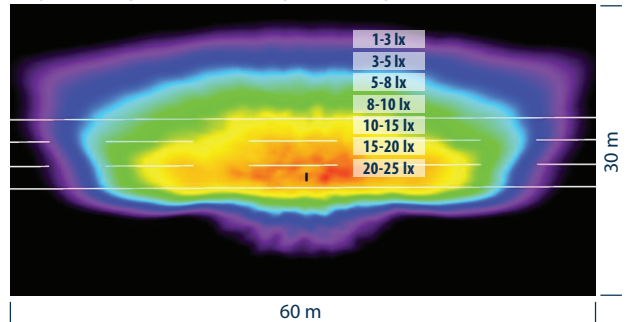
### general description

mira 8000 P200 is a self-sufficient solar light for outdoor residential and municipal lighting. Equipped with advanced LED- and photovoltaic technology, mira 8000 P200 provides uniform light distribution, ideal for street and roadway applications. Due to the unique energy management system, mira 8000 P200 ensures excellent operating reliability.

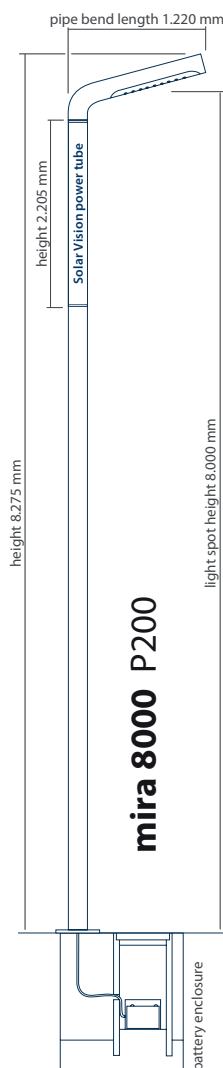
### light distribution



lengthwise aligned; mira 8000, light spot height: 8 m, tilt 15°

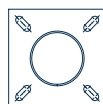


### dimensions



### technical data

LIGHT HEAD, OPTICAL FEATURES	
Light source	10 high-efficiency LEDs
Maximum power	40 Watt
Maximum LED luminous flux	6.000 lm
Light output ratio	97%
LED-light temperature	neutral-white, 5.350 K, CRI >70 (standard) (opt. neutral white, 4.100 K, warm-white, 3.100 K)
Typ. service life of LEDs	> 50.000 hours
LIGHT HEAD, MECHANICS	
Dimensions (width, height, length)	154 x 80 x 780 mm
Pipe bend length	1.220 mm (180 mm diameter, 15° tilt)
Light head weight	25 kg
Light head material	Pipe bend: steel, hot-dip galvanized, paint-coated RAL 9005, deep black LED housing: aluminium, powder-coated RAL 9006, white aluminium
LIGHT SYSTEM	
Installation height	8.257 mm
Light spot height	8.000 mm
Diameter of light pole	180 mm
Light pole material	steel, hot-dip galvanized, paint-coated RAL 9006, white aluminium
Weight	ca. 260 kg
Installation mode	flange plate (opt. sleeve foundation)
STREET LIGHTING	
Typical pole distance	25 m
Typical street width	9 m
Typical illuminance	15 lx
SOLAR VISION POWER TUBE	
Length of PV-tube	2.205 mm
Diameter of PV-tube	180 mm
PV-Technology	silicon-solar cells
Number of PV-cells	64 pcs
Nominal power output	210 Watt
SOLAR VISION POWER CONTROL (SOLAR VERSION)	
Programmable microcontroller	✓
Dynamic light profile	customer-specific
Capacity of battery	120 Ah / 12 V
STANDARDS / COMPLIANCES	
ISO-Certification	ISO 9001-2008
Illumination	according EN 13201
Light poles certificates	EN 40-5, EN40-3-1, ISO 1461
Ingress protection rating	IP65
EMV, electronics certificates	EN 55015, EN 61547
Photovoltaics certificate	EN 61215 (adapted)
Temperature range	-30 °C to +60 °C
CE-certificate	✓
RoHS	✓
ORDER INFORMATION / ONORDER NUMBER	
Complete light Solar Vision power tube P200, mira 8000 luminaire, Solar Vision power control, cable harness, pole, pipe bend, battery	order code 9-01-17-0001-00
Kernel light Solar Vision power tube P200, mira 8000 luminaire, Solar Vision power control, cable harness; <b>Not included:</b> pole, pipe bend and battery	order code 9-01-17-0002-00



**Flange plate**  
according to EN 40-5  
dimensions: 330 x 330 x 20 mm  
hole spacing: 200 to 250 mm